



This manual is for reference and historical purposes, all rights reserved.

This creation is copyright© by M. Butkus, NJ, U.S.A.

These creations may not be sold or distributed without the expressed permission of the producer

I have no connection with any camera company

On-line camera manual library

If you find this manual useful, how about a donation of \$2 to:

M. Butkus, 29 Lake Ave., High Bridge, NJ 08829-1701

and send your e-mail address so I can thank you.

Most other places would charge you \$7.50 for a electronic copy or

\$18.00 for a hard to read Xerox copy.

This will allow me to continue this site, buy new manuals and pay their shipping costs.

It'll make you feel better, won't it?

If you use Pay Pal, go to my web site

www.orphancameras.com and choose the secure PayPal donation icon.

PENTAX®

DATA BACK F_E

OPERATING MANUAL

Thank you very much for purchasing the PENTAX Data Back F_E. The Data Back F_E is a special camera back which allows you to record data information on your photographs. Replacing the standard camera back, this Data Back has five modes, allowing you to print the selected data clearly on the film. Please read this operating manual carefully before using.

The Data Back F_E comes supplied with a factory-supplied sample battery.

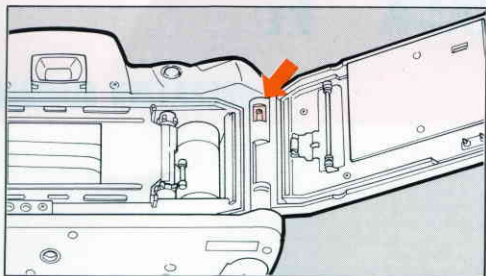


SPECIFICATION

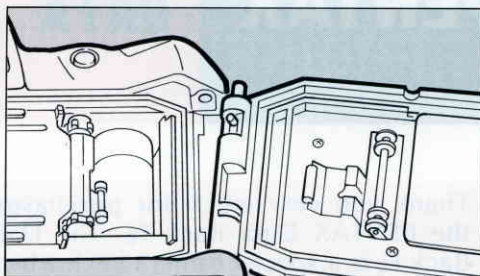
Camera	Pentax Z-20/PZ-20, Z-70/PZ-70
Data printout	7-segment, 6-digit liquid crystal display (LCD)
Printout confirmation	"—" indication blinks for a few seconds in LCD panel
Printout position	On the lower right corner of the picture positioned horizontally
Character size	Approx. 0.75(H) × 0.45(W) mm
Printing modes	year/month/day, day/month/year, month/day/year, day/hour/minute, and "-- --" (blank).
Film speed	ISO 25-1600
Power source	CR 2025 (lithium battery)
Number of prints	Approx. 5,000
Size	139.5(W) × 58(H) × 21(W)mm (5.5" (W) × 2.3" (H) × 0.8" (W))
Weight	63.0g (2.2oz.) without battery
Accessory	Special case

SPECIFICATIONS ARE SUBJECT TO CHANGE AT ANY TIME WITHOUT NOTIFICATION OR ANY OBLIGATION ON THE PART OF THE MANUFACTURER.

INSTALLING THE DATA BACK F_E



To replace the standard camera back with the Data Back F_E, open the camera back and then tilt it outward while pressing the back-cover-release pin to remove it. Store the removed camera back in the supplied case to protect it from being damaged.

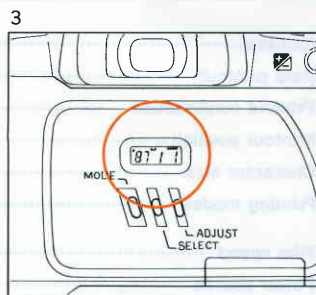
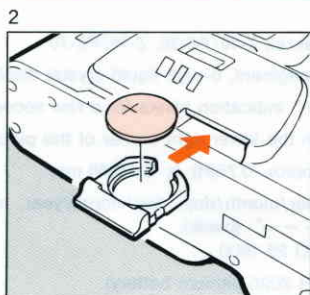
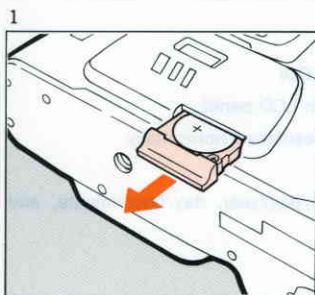


Install the Data Back F_E, first fitting its lower hinge pin to the camera, then its top hinge pin while pressing on the back-cover-release pin. Then, release the back-cover-release pin to secure it in place.

Note:

Avoid touching the glass surfaces of the data recording window to protect against possible damage from fingerprints, dust, grit and grease. Use a blower or camel's hair brush to remove the dirt and dust on the window.

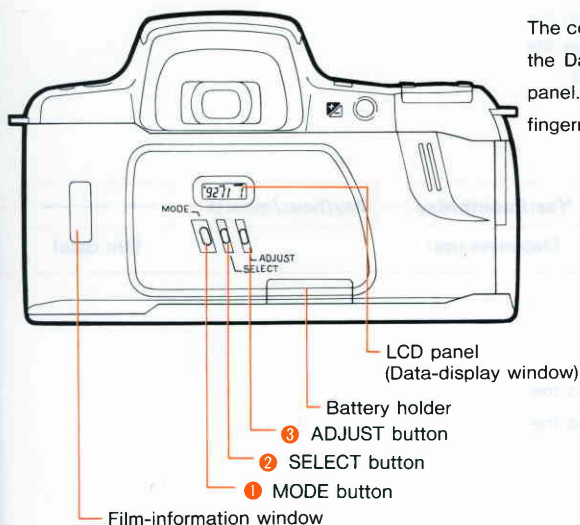
INSERTING THE BATTERY



1. Remove the battery holder of the Data Back F_E by pulling it in the direction of the arrow.
2. Place the new battery in the battery holder with its ⊕ side facing up until it locks in place with a click.

3. If the data indication does not appear in the LCD panel, it means that the battery has not been inserted properly or the battery is low. After the battery is inserted, adjust the data by following the adjustment procedure described on next page.

- The Data Back F_E uses one lithium battery, type CR 2025.



The correct time is entered via three buttons located on the Data Back. The time setting appears in the LCD panel. Carefully push these buttons with a coin or your fingernail.

Correcting the data

1. At each press of the SELECT button ②, a different category of digits in the LCD panel blinks. Press the SELECT button ② until you reach the blinking digit(s) you want to change. The digit(s) will repeat their cycle in the following order as you press the SELECT button ②.

Date: Year → Month → Day

Time: Hour → Minute → (Second)

2. Press the ADJUST button ③ to change digits of the specified category you chose with the SELECT button ②. Digits increase by one each time you press the ADJUST button ③. Holding down the button will bring on continuous digit advance.


Adjusting the data

1. Press the SELECT button ② to make the year, month or day you want to change blink.
2. Change the data with the ADJUST button ③.
3. Press the SELECT ② button to stop the digit from blinking, after you have changed the data. The adjusted data has now been entered.

Adjusting the hour/minute

1. Press the SELECT button ② to make the hour, minute or second (:) you want to change blink.
2. Change the data (hour or minute) with the ADJUST button ③.
To change the second (:), press the ADJUST button ③ while (:) is blinking, then release the button in sync with a time signal.
3. Press the SELECT ② button to stop the adjusted hour/minute from blinking. The adjusted data has now been entered. The bar mark "—" appears on the LCD panel, indicating that data imprinting choices are possible.

SWITCHING THE MODE

At each press of the MODE button , the mode in the LCD panel switches as shown in the chart. When the desired data mode appears in the panel, release the button. "-----" indicates no data will be imprinted.



Notes:

- "M" on the LCD panel indicates "Month".
- As the shutter is released, the bar mark "—" in the display blinks for a few seconds, indicating that the data has been imprinted.

OPERATIONAL PRECAUTIONS

- The data on the LCD panel is imprinted on each frame you expose.
- "Year-Month-Day" and "Day-Hour-Minute" cannot both be imprinted at the same time.
- The working temperature for data printing is 0-50°C.
- Use DX-coded films with ISO ratings from 25-1600. When such film is loaded, the film speed is automatically set by the camera.
- If high-speed film with an ISO rating of 1000-1600 is used, the imprinted characters may blur.
- If film with an ISO rating of 50 or lower is used, the printed characters may be dark or dim.
- If you release the shutter while the blinking data is being corrected, the data cannot be imprinted even if the shutter is released.
- The Data Back F_E operates on a 3V lithium battery, type CR2025. The battery will last for approx. 3 years. If the data on a picture becomes invisible, replace the battery.
- Never try to break up or recharge the battery. Also, do not dispose of the battery in fire, as the battery may explode.
- Always keep the battery out of the reach of children.
- If the corner of the picture where the data is imprinted has a white or yellow object, the data may be difficult to see. When composing your photographs, try to avoid brightly-colored subjects in that corner.



Photographed on November 1, 1992



Asahi Optical Co., Ltd., 11-1, Nagata-cho 1-chome, Chiyoda-ku, Tokyo 100, JAPAN
Pentax Europe n.v. Weveldiaan 3-5, 1930 Zaventem, BELGIUM
Pentax GmbH, Julius-Vosseler-Strasse, 104, D-22527 Hamburg, GERMANY
Pentax U.K. Limited, Pentax House, Heron Drive, Langley, Slough SL3 8PN, U.K.
Pentax France S.A. Z.I. Argenteuil, 12, rue Ambroise Croizat, 95100 Argenteuil, FRANCE
Pentax Benelux B.V. (for Netherlands) Spinveld 25, 4815 HR Breda, NETHERLANDS
(for Belgium & Luxembourg) Weveldiaan 3-5, 1930 Zaventem, BELGIUM
Pentax (Schweiz) AG Industriestrasse 2, 8305 Dietlikon, SWITZERLAND
Pentax Scandinavia AB Falhgsgsleden 57, 75127 Uppsala, SWEDEN
Pentax Corporation 35 Inverness Drive East, Englewood, Colorado 80112, U.S.A.
Pentax Canada Inc. 3131 Universal Drive, Mississauga, Ontario L4X 2E5, CANADA

56912 ENG

Copyright © Asahi Optical Co., Ltd. 1992
03-9506 Printed in Japan